



# Rughani Infra Buid



## Pearl Developers

PEARL - Porbandar PEARL is a luxurious sea facing residential building the building is located in a posh locality on Chowpaty School, Hospital, market and Temple are located in the nearby Area. PEARL comprises of 3BH flats ranging from 1405 sqft to 1057 sqft.

### Site Address:

Opp Kankai Mandir, Chowpati, Porbandar

### Developers:

Pearl Developers

### Architect

Jatin Parmar - 94262 64778 (Rajkot)

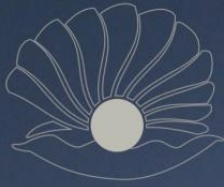
### Atructure Design

### Booking Contact:

Harshitbhai Rughani -98252 31468

Jignesh Lakhani - 98254 08998

Hardik Rughani - 99985 26533







### **THE PROJECT**

- Ground floor Commercial & +3 Story Residential Project
- 3 BHK Spacious Flats
- Structural design with earthquake prevention
- Designer entrance lobby
- 24 hours security system
- Sufficient Car- Parking
- Attractive Elevation
- Building with 2- side roads
- Maintenance fund planning considering the future.







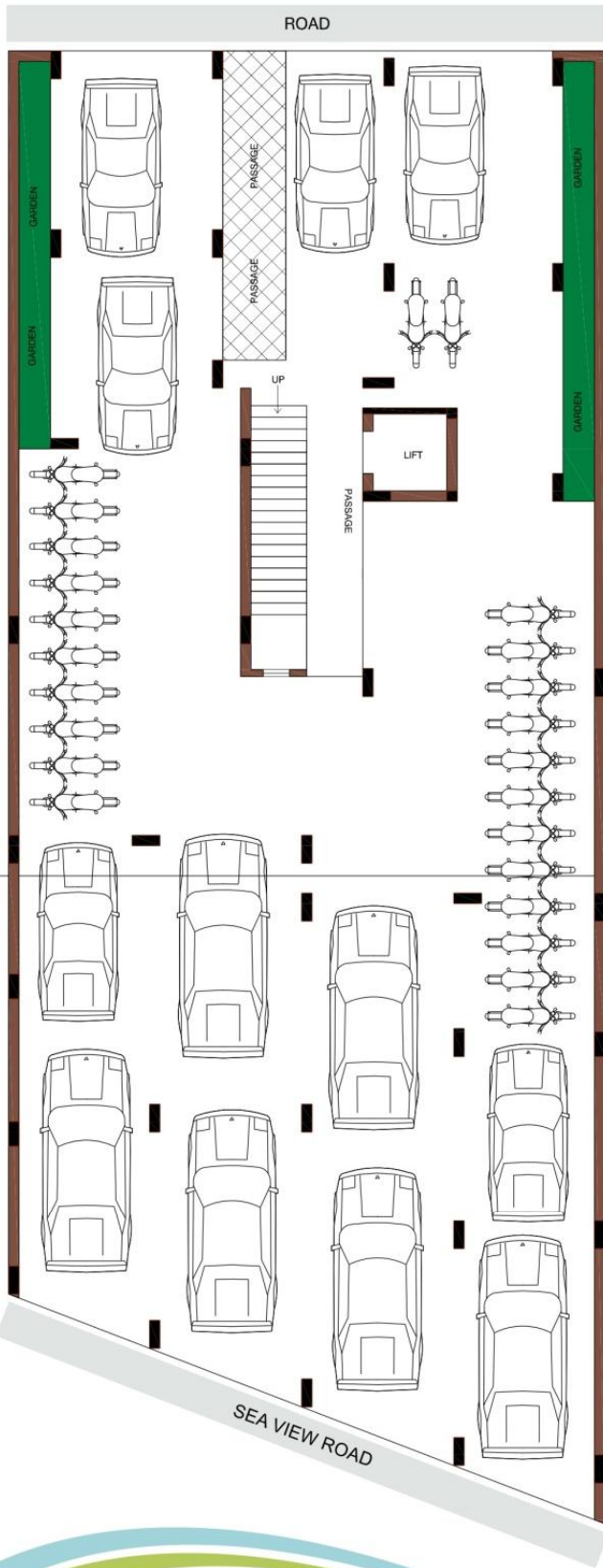
### **THE PROJECT**

- Ground floor Commercial & +3 Story Residential Project
- 3 BHK Spacious Flats
- Structural design with earthquake prevention
- Designer entrance lobby
- 24 hours security system
- Sufficient Car- Parking
- Attractive Elevation
- Building with 2- side roads
- Maintenance fund planning considering the future.

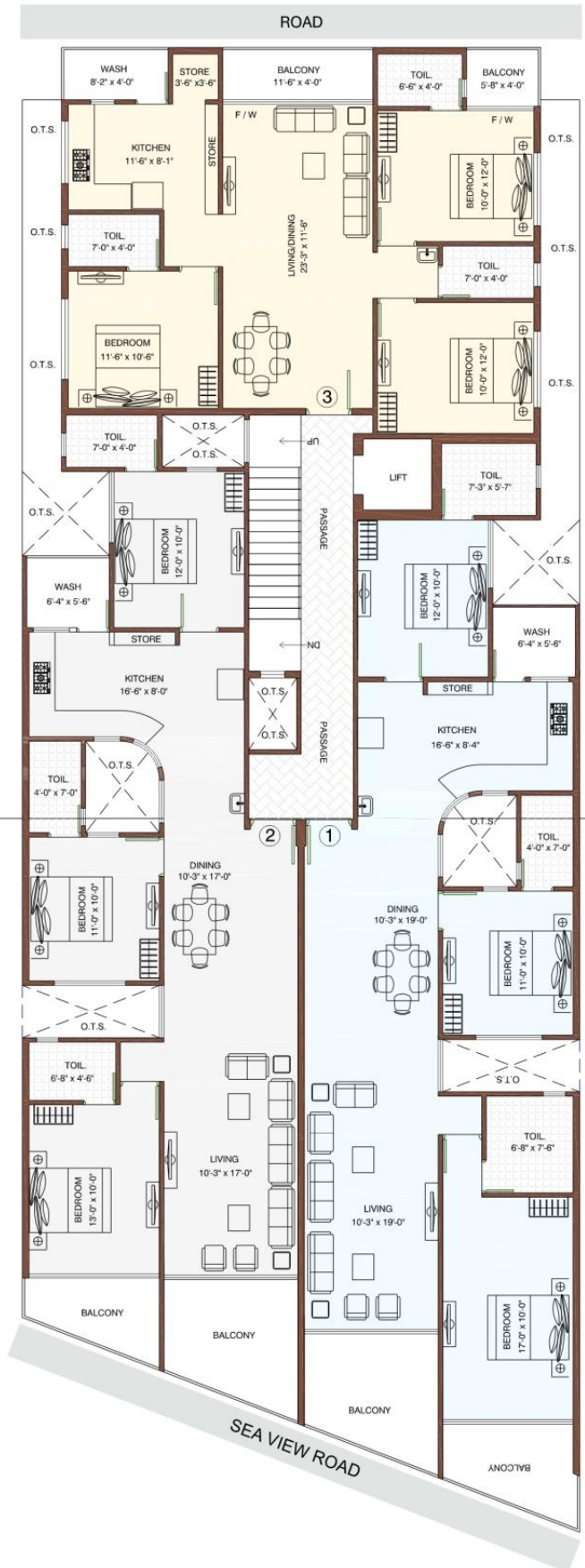




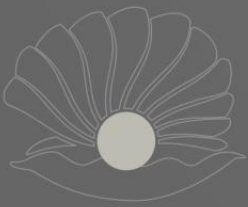
# GROUND FLOOR PLAN



# TYPICAL FLOOR PLAN







### THE AMENITIES

- Anodized 3-track sliding windows with plain glass
- Telephone, Tv and Internet points in all rooms
- Video Door security system in each flat with cameras at the entry gates.
- Safety grills in all windows.
- Designer main doors.
- Elevators of standard company
- Sufficient parking at Ground floor
- Common toilets/security cabin at ground floor
- Attractive vitrified tiles flooring
- Kitchen platform with granite stone and ss sink
- Attractive Glazed tiles in kitchen and toilets till beam level
- Attractive Glazed tiles in washing balcony
- Kota stone shelf in store room
- Granite window sill
- Standard JAQUAR or equivalent company bathroom fittings
- Standard brand modular switches
- RR/Finolex or equivalent company FR cable wiring
- AC points in living and all bedrooms
- Flat indoor finish with putti primer, outdoor weatherproof paint
- Common water storage plant
- Aqua guard point in kitchen
- Designer Parking tiles in parking area
- Separate water supply lines domestic and flushing water.
- Generator for Lift, Common Lights and Water pumps.
- Fire safety equipment

